



Bathing establishment Fact Sheet

Bathhouse name	NORGE
Address	TERRAZZA DELLA REPUBBLICA, 16
City	VIAREGGIO (LU)
Contacts	PHONE +39 0584 50013
Website	Not detected

TESTED BY: [Handy Superabile - Social Promotion Association](#) in summer 2023

Please note The following information refers to the verification date shown at the bottom of each card. **The Association** is not responsible for any significant changes made by the property after the visit.

Summary

Bathing establishment Fact Sheet	1
Arrival at the facility.....	2
Private/public parking.....	2
Pathway from the parking lot to the main entrance	2
Reception.....	3
Bar/restaurant	4
Internal Pathways and common services.....	5
Internal Pathways	5
Toilet and shower accessible to guests with reduced mobility	5
Changing room	6
Beach.....	7
Children's play area	9
Swimming pool	9
Doctors' Offices/Healthcare Facilities	10

Project carried out with the contribution of the





Arrival at the facility

Private/public parking

Presence of private parking	NO
Public parking nearby	YES with parking spaces reserved for the disabled: 1 every 50 at about 50/100 meters
Type of public car park	asphalt
	

Pathway from the parking lot to the main entrance

Pathway from the car park to the entrance	by ramp length 400 cm, width > 100 cm, slope 15%.,
There are markers and tactile maps	NO
Usable door/entrance width	more than 90 cm





Reception

Umbrella booking system	<input type="checkbox"/> Via web <input checked="" type="checkbox"/> By phone <input checked="" type="checkbox"/> On-site
Presence of multilingual staff	Not detected
Presence of plant plan with key to services available	NO
Presence of visuo-tactile map	NO
Bulletin board/information panels at an average height of 130 cm in a well-lit area and font size at least 14 dpi with a contrast ratio greater than 4.5:1	NO
The staff attended training courses on welcoming people with different disabilities	NO





Bar/restaurant

Type of venue	Snack bar
Access to the premises	The snack bar can be reached via a ramp 632 cm long, width > 100 cm, slope 12% while the veranda with tables can be reached on the level
Usable door/entrance width	Not detected
Bar counter	less than 100 cm
Types of tables	The tables in the veranda have 4 legged while at the bar they have a central support and could hinder the approach with the wheelchair
Space underneath the tables from the floor	65 cm for the veranda tables and 71 cm for the bar tables
Multilingual menu	Not detected
Menus with large print fonts	NO
Braille menu	NO
Table service for people with disabilities	YES
Availability of gluten-free food	<input type="checkbox"/> bread <input type="checkbox"/> pasta <input type="checkbox"/> biscuits <input checked="" type="checkbox"/> ice cream <input type="checkbox"/> Pre-packaged foods





Internal Pathways and common services

Internal Pathways


<p>Indicate whether the pathways connecting the entrance to the beach are flat or with ramps in addition to those already described</p>	<p>Obstacle-free paths</p>
	

Toilet and shower accessible to guests with reduced mobility

<p>Number of toilets accessible/usable by guests with reduced mobility</p>	<p>1</p>
<p>Access to the premises</p>	<p>by ramp length 632 cm, width >100 cm, gradient 12%</p>
<p>Usable width of the entrance door</p>	<p>87.5 cm</p>
<p>Toilet height</p>	<p>50 cm</p>
<p>Open front toilet seat</p>	<p>NO</p>
<p>Support handles</p>	<p>to the right of the toilet</p>
<p>Flexible hand shower at the side of the toilet</p>	<p>NO</p>






Free space on the sides of the toilet	left 95 cm right 26 cm frontal 60 cm
Electric doorbell/phone	NO
Washbasin with space underneath for wheelchair	68 cm
Height from the ground on the bottom edge of the mirror	Not detected
Baby changing table	Not detected
	Adapted bathroom with shower
Accessible shower available for guests with reduced mobility	YES in common with the toilet room
Shower type	with box gate cm and dimensions 70cm X 65cm
Floor-level shower	NO with 7 cm high step
Shower chair	wall-mounted folding
Grab bar	YES
Presence of shower head or ups and downs	Flexible shower
Electric doorbell/phone	NO

Changing room





Accessible changing room available for guests with reduced mobility	YES
Access to the premises	by ramp length 632cm, width >100cm, gradient 12%
Usable door/entrance width	86 cm
Size of the dressing room	width 124cm and depth 163cm
Presence of a cot	NO
Coat rack height from the ground	180 cm
	

Beach

Type of beach	sand
Access to the beach	Flat
Walkway to reach the umbrellas	YES
Type of walkway	PVC
Walkway width	100 cm





<p>Removable Platform between the walkway and the umbrella station to facilitate the passage and parking wheelchair</p>	<p>YES</p>
<p>Amphibious beach chair available for helping people with reduced mobility to enjoy swimming (owned by the establishment or by association)</p>	<p>YES</p>



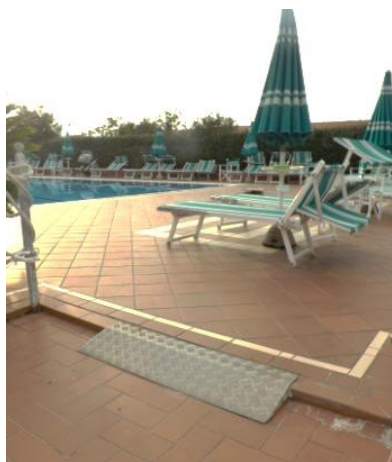


Children's play area

Children's play area	Not detected
----------------------	--------------

Swimming pool

The property has a swimming pool	YES
Access to the swimming pool	by ramp length 30cm, width 100cm
Useful width of the entrance gate	more than 90 cm
Access to the pool	with ladder
Bathing aids for guests with reduced mobility	Not detected





Doctors' Offices/Healthcare Facilities

Hospitals near the facility	Ospedale Versilia SS 1, 335, 55049 Camaiole LU Telephone: 0584 6051
Other Healthcare Facilities	ASL Health District No. 12 Viareggio Piazza Buon Consiglio Viareggio Tel. Phone 0584.6056353 Dialysis service c/o HOSPITAL OF CISANELLO DI PISA Department for dialysis therapy (hemodialysis – peritoneal dialysis) in the period June - September Dialysis Holiday service with availability of n. 6 beds tel. 050 997250 – 997253 – 997256

TESTED BY: **Handy Superabile Social Promotion Association in summer 2023**

